

List of working drawings of the main set

Page	Name of the item	Notes
01	General data	
02	Protective-hermetic doors DU-I (900 kPa), 1200×2000 TU U 25.1-38587375-001:2016	
03	Protective-hermetic doors DU-III (440 kPa), 1200×2000 TU U 25.1-38587375-001:2016	
04	Protective-hermetic shutter SU-I (900 kPa), 800×800, TU U 25.1-38587375-001:2016	
05	Protective-hermetic doors DU-IV for shelters, $\Delta P=20$ and 100 kPa; Hermetic doors DU-IV 1200×2000; TU U 25.1-38587375-001:2016	
06	Options for fastening doors in existing walls	

Note: Fixing doors of other sizes than those specified in these recommendations, we recommend calculating similarly, with the corresponding increase or decreasing in the number of reinforcement (anchors, embedded, mounting plates).
Decisions on door fastening are made by the building designer based on the specific conditions of the project, size and type of doors/shutters (hatches).

Recommendations are not a substitute for proper design.

WEBCOM LLC

Exclusive distributor of PRO ZAHYST doors

ПРО ЗАХИСТ™

tel.: +380 96 253 00 22
e-mail: info@skz24.com

No	Description	Date

Recommendations and examples of installation of metal protective hermetic doors in monolithic reinforced concrete structures of civil defense facilities.

General data

Project number

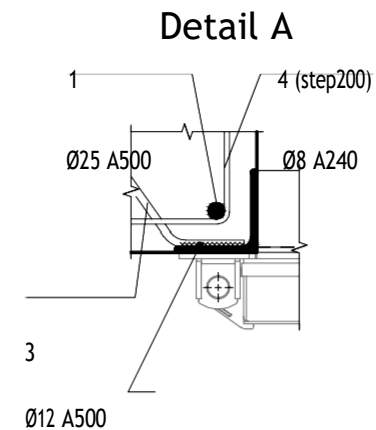
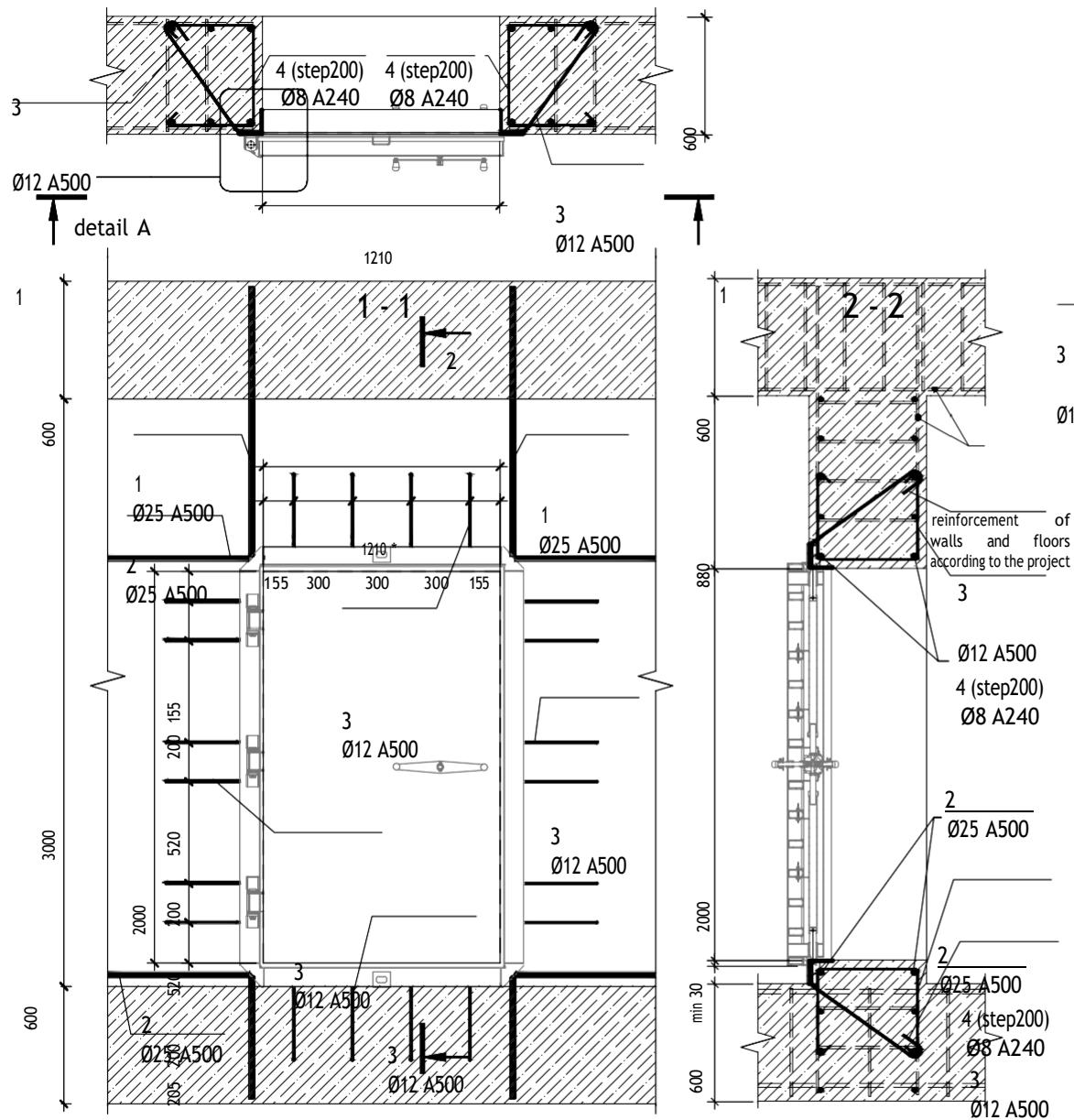
Date

Developed by

Reviewed by

01.24

01



Detail A
isometric view

1

Ø25 A500

4 (step200)
Ø8 A240

1

Ø25 A500

3

Ø12 A500

Specification of reinforcement DU-I 1200x2000

item	diameter	length, mm	quantity, pcs.	weight, kg	total length, m	weight, kg
1	Ø25 A500C	4150	4	16.0	16.6	64.0
2	Ø25 A500C	3600	4	13.9	14.4	55.5
3	Ø12 A500C	920	20	0.8	18.4	16.4
4	Ø8 A240C	1514	36	0.6	6.1	2.4
			64		55.5	138.2

- 1 The door fastening is designed for quasi-static load applied perpendicularly to the wall plane and directed in the direction opposite to the wave action. The value of quasi-static load is assumed to be 25 kPa.
- 2 The example is given for the door dimensions of wall - 600 mm, floor - 600 mm, clear height - 3 m. When changing the parameters, the lengths of reinforcing bars should be changed accordingly.
- 3 The drawings show the reinforcement for the door device. The design reinforcement of the shelter/storage structures is determined by calculations and indicated by a dashed line.
- 4 Install the doors in the design position during the reinforcement of the structures, before the concrete mix is placed.
- 5 Fix the door leaf strictly vertically with a permissible deviation of 2 mm.
- 6 For the work on the installation of doors, draw up acts of hidden works.
- 7 All mechanical and hermetic devices of the door shall be protected from the concrete mixture.
- 8 Ensure that the doors are fixed during the concrete mix placement.
- 9 The recommendations specified in this example may be partially implemented, with changes in accordance with the conditions of the specific project.

ПРО ЗАХИСТ™

[illegible]

Recommendations and examples of installation of metal protective hermetic doors in monolithic reinforced concrete structures of civil defense facilities.

Protective-hermetic door DU-I, 1200×2000 TU
U 25.1-38587375-001:2016

Project number	02
Date 06.23	
Developed by	
Reviewed by	30.06.2023 16:23:50