

# SAFE 360

## CBRN Filtration and Ventilation System

Advanced collective protection CBRN (chemical, biological, radiological & nuclear) air filtration and ventilation system designed for small shelters, bunkers and other applications. The system provides fresh filtered air for safe breathing and helps to create an overpressure and safe environment inside the intended area.



### Highlights

- *Airflow filtration / ventilation: 36 / 54 m<sup>3</sup>/h*
- *Electric blower: 12V DC / 230V AC*
- *Complete kit: blast valve, prefilter, CBRN filter, electric blower, manual backup, overpressure valve, etc.*
- *Very cost-effective.*
- *Tested and certified to SI 4570 standard.*
- *Approved by civil defence authorities in various countries.*
- *Installed in tens of thousands of shelters around the world.*



SAFE 360 Kit

## Main Components

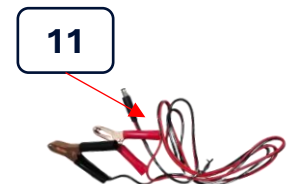
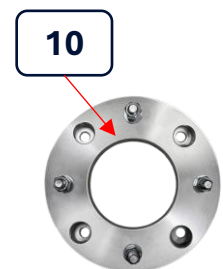
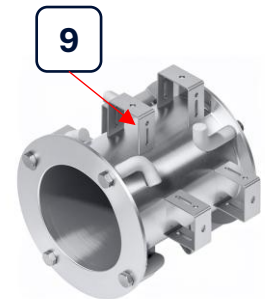
1. CBRN filter
2. Electric Blower
3. AC to DC Converter
4. Manual backup
5. Blast valve + prefilter
6. Overpressure blast valve
7. Decorative case
8. Clean air hose



## Optional Items

9. Wall sleeve with 4" flange for casting in concrete
10. Retrofit 4" flange for installation on the existing wall
11. Cables for connection to 12V battery

*Wall sleeves / retrofit flanges required for connection of the blast valve and overpressure valve to the wall)*



## Watch the Videos on YouTube

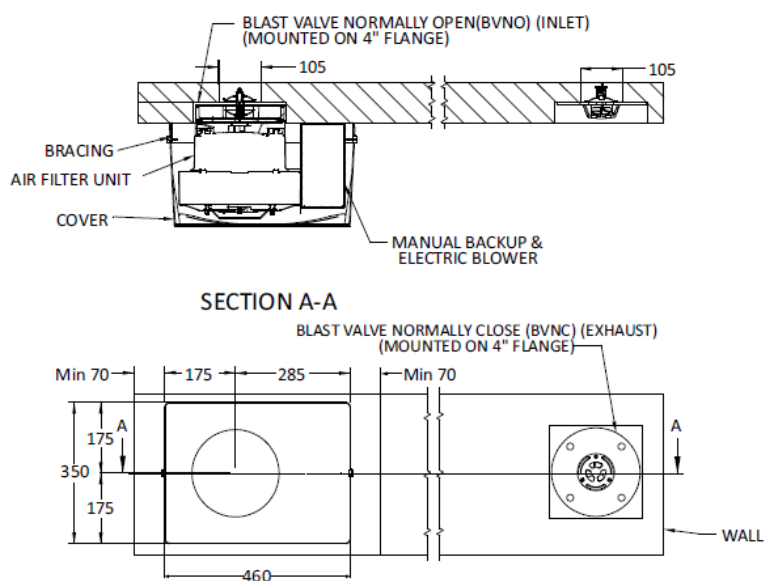
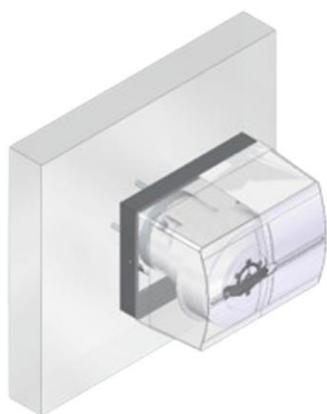


[Filtration mode Operation](#)

[Ventilation mode Operation](#)

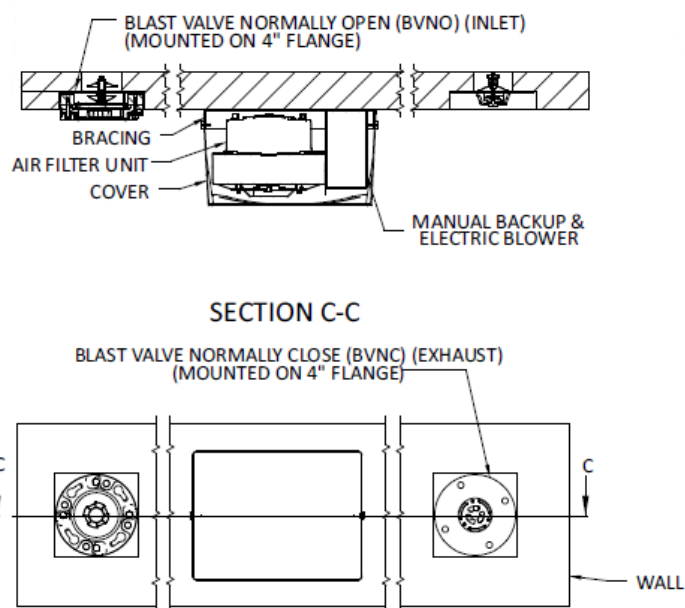
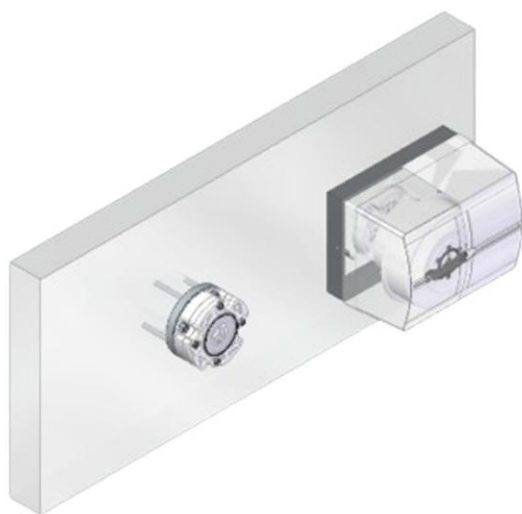
## First Option of Installation

Blast valve located under the decorative case



## Second Option of Installation

Blast valve aside of the decorative cover



**Blast Valve (BVNO 50 4L) - Air Entrance**

Returned Pressure durability	>900 (9)	kPa (bar)
Pressure drop (Ventilation mode)	200	Pa
Pressure drop (Filtration mode)	95	Pa

**CBRN Filter (AFU 36)**

Airflow rate (nominal)	36	m <sup>3</sup> /h
Initial Pressure Drop @ nominal	460	Pa
Total filter weight	7	kg
Mechanical filtration efficiency	≥99.995	%

**Electric Blower (EBL 180)**

Airflow (Ventilation mode)	54	m <sup>3</sup> /h
Airflow (CBRN filtration mode)	36	m <sup>3</sup> /h
Static Pressure (Filtration mode)	720	mmWc
Static Pressure (Filtration mode)	980	mmWc
Electric motor / Adapter voltage	12 DC / 100-240 AC	V
Electric motor current (DC Motor)	3,3	A
Manual operation (backup)	1	Person
Frequency	50/60	Hz

**Overpressure Blast Valve (BVNC 40) - Air Exhaust**

Returned Pressure durability	>900 (9)	kPa (bar)
Pressure drop (Ventilation mode)	225	Pa
Pressure drop (Filtration mode)	65	Pa



**Atmas Group** is a Finland-based global supplier of products, technologies, project support services and complete solutions in the areas of civil defense shelters and protected spaces, facilities reinforcement against CBRN, blast, ballistic, forced entry and EMP threats, as well as security, safety and emergency response.

Atmas is trusted by customers and partners around the world providing a unique combination of solutions "under one roof", with a focus on advanced technologies, product customization, uncompromised service and comprehensive project support.

## Atmas Group Oy

Hermannin rantatie 3A

00540 Helsinki

Finland

+358 449843373

[info@atmasgroup.com](mailto:info@atmasgroup.com)

[www.atmasgroup.com](http://www.atmasgroup.com)