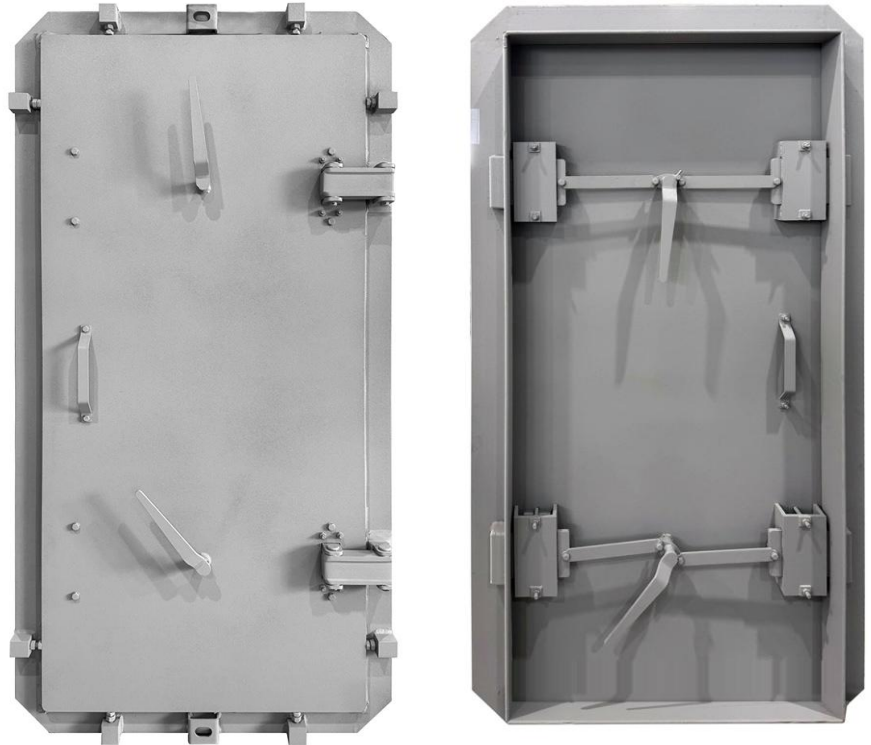


## CATALOG

# Doors and Openings Protection Solutions



ATM SO-1 / SO-1s is a series of shelter blast rated, and gastight doors designed to meet Finnish S1 shelter norms.

**Blast Rating****300 (3) kPa (bar)****Splinter / Ballistic Protection****Yes, for SO-1s****Gastight****Yes**

Main Features	
Installation options	Casting or Retrofit, right or left
Configuration	Singe or double leaf
Clear opening sizes	900x2000mm, 1200x2000mm and custom sizes
Locking mechanism	Levers with multiple locking points
Leaf structure	Steel plate 20mm or 30mm

DU-IVR is a series of shelter blast rated, and gastight doors designed to meet CEE shelter norms and perfectly fit for new construction or renovation projects. The DU-IVR can be single leaf or double leaf with various sizes.

## Blast Rating

**100 (1) kPa (bar)**

## Splinter / Ballistic Protection

**Optional**

## Gastight

**Yes**



Main Features	
Installation options	Casting or Retrofit, right or left
Configuration	Singe or double leaf
Clear opening sizes	900x2000mm, 1200x2000mm and custom sizes
Locking mechanism	Levers with multiple locking points
Leaf structure	Reinforced beams with panels

DU-IV 250 is a series of shelter blast rated, and gastight doors designed for special applications like prefabricated shelters and bunkers and due to options to adapt special frame can be designed to fit customers specs

## Blast Rating

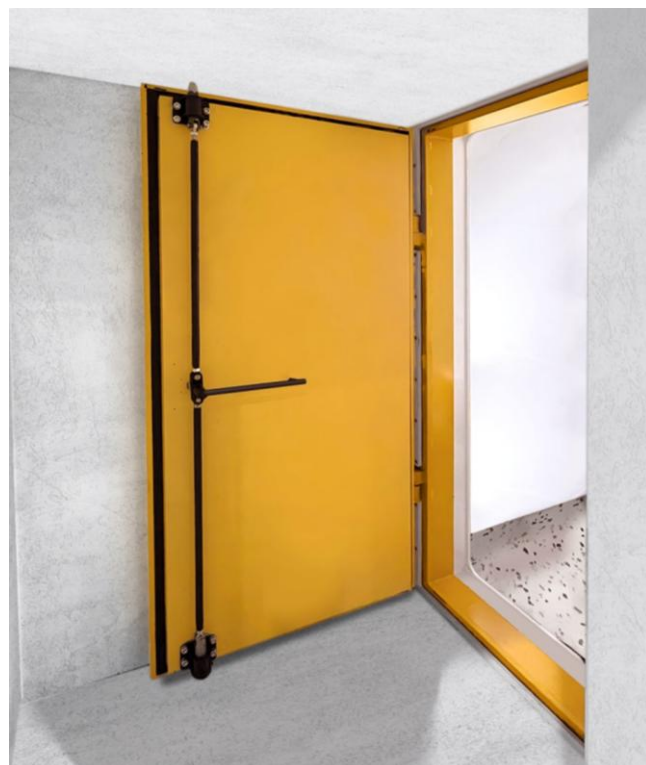
**250 (2.5) kPa (bar)**

## Splinter / Ballistic Protection

**Optional**

## Gastight

**Yes**



Main Features	
Installation options	Casting or Retrofit, right or left
Configuration	Singe or double leaf
Clear opening sizes	900x2000mm, 1200x2000mm and custom sizes
Locking mechanism	Levers with multiple locking points
Leaf structure	Reinforced beams with panels

DU-III and DU-I are part of a heavy-duty shelter doors series blast rated, and gastight, designed to meet CEE shelter norms and perfectly fit for new construction or renovation projects.

## Blast Rating

**440 (4.4) / 900 (9) kPa  
(bar) Static**

## Splinter / Ballistic Protection

**Optional**

## Gastight

**Yes**



Main Features	
Installation options	Casting or Retrofit, right or left
Configuration	Singe or double leaf
Clear opening sizes	900x2000mm, 1200x2000mm and custom sizes
Locking mechanism	Levers with multiple locking points
Leaf structure	Reinforced beams with panels



Concrete filled doors are specially designed doors which combine a reinforced frame with special reinforced concrete filling for ballistic and fire protection. The door was designed with consideration to withstand long duration blast pressure.

## Blast Rating

**300 (3) @ 20ms**

## Splinter / Ballistic Protection

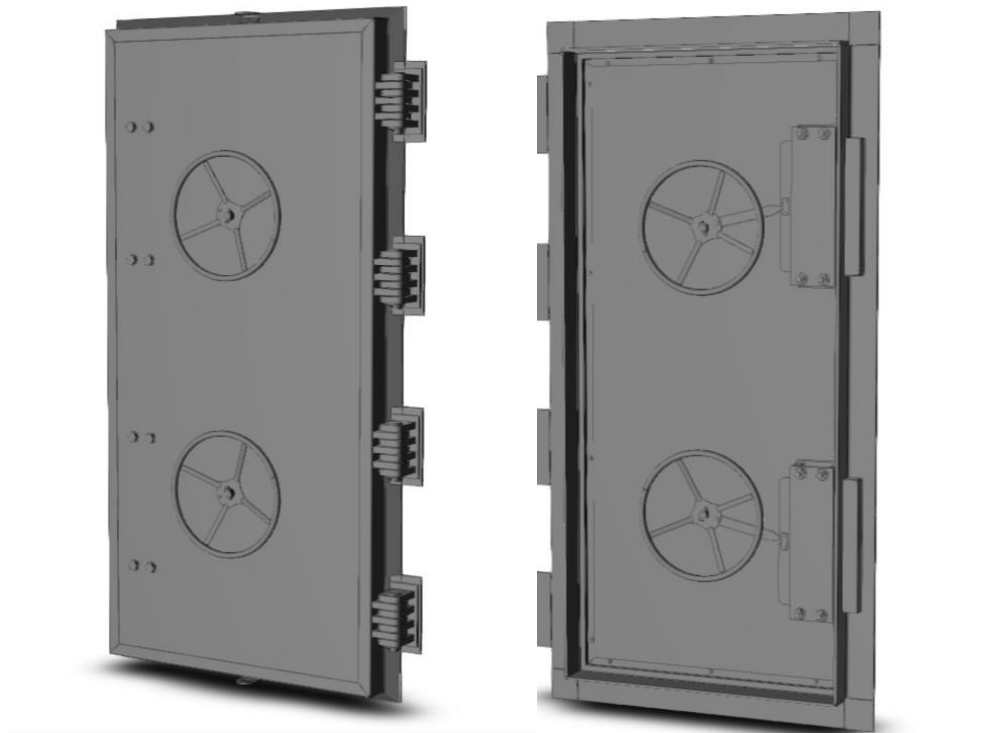
**Yes**

## Fire Rating

**Yes**

## Gastight

**Yes**



Main Features	
Installation options	Casting or Retrofit, right or left
Configuration	Singe leaf
Clear opening sizes	900x2000mm, 1200x2000mm and custom sizes
Locking mechanism	Levers with multiple locking points
Leaf structure	Reinforced beams with panels + concrete

SO-1 and SO-2 is a series of shelter blast rated, and gastight doors designed to meet Finnish shelter norms for blast rating, ground shock resistance 30 g and more.

## Blast Rating

Technical norms: Finnish norms

## Splinter / Ballistic Protection

Yes, for some models

## Gastight

Yes



Main Features	
Installation options	Casting or Retrofit, right or left
Configuration	Singe or double leaf
Clear opening sizes	900x2000mm, 1200x2000mm and custom sizes
Locking mechanism	Levers with multiple locking points
Leaf structure	Steel plate 20mm or 30mm

M is a series of shelter blast rated, and gastight doors designed to meet Israeli 4422 shelter standard. The door can be equipped with additional security or fire door on the same threshold.

### Blast Rating

**Technical norms: Israeli standard 4422**

### Splinter / Ballistic Protection

**Yes**

### Gastight

**Yes**



Main Features	
Installation options	Casting or Retrofit, right or left
Configuration	Singe or double leaf
Clear opening sizes	900x2000mm, 1200x2000mm and custom sizes
Locking mechanism	Levers with multiple locking points
Leaf structure	Steel plate 25mm or 32mm



Our vault doors are tested and certified for EN1143-1 standard (Class II - XIII), and designed for maximum protection, offering protection against blasts, ballistic threats, forced entry, and fire. Perfect for securing sensitive areas, such as vault rooms and protected spaces.

## Burglary Resistance

**EN1143-1 standard (Class II - XIII)**

## Splinter / Ballistic Protection

**Yes**

## Blast Protection

**Yes**

## Fire Rating

**Yes**

## Gastight

**Optional**



Main Features	
Installation options	Casting or Retrofit, right or left
Configuration	Singe leaf
Clear opening sizes	900x2000mm, 1200x2000mm and custom sizes
Locking mechanism	Levers with multiple locking points, electronic optional
Leaf structure	Reinforced beams with panels + concrete

The roller shutters are made from composite materials according to the project specifications, size and protection level. The shutters can be equipped with electric motor for easy operation and can be a perfect solution for private houses, governmental buildings, protected structures, airports, museums, datacentres, store and commercial areas, banks, shopping malls, shelters and safe rooms and more.

## Burglary Resistance

Yes

## Splinter / Ballistic Protection

Yes

## Blast Protection

Yes

## Fire Rating

Yes



These doors are designed to comply with requirements of European security standard EN 1627, offering robust protection against forced entry and unauthorized access. Manufactured from high-quality steel and other durable materials, they come equipped with advanced locking systems and accessories for enhanced security.

## Security

**EN1143-1 standard (Class II - XIII)**

## Splinter / Ballistic Protection

**Yes**

## Blast Protection

**Optional**

## Fire Rating

**Yes**

## Gastight

**Optional**



Main Features	
Installation options	Casting or Retrofit, right or left
Configuration	Singe leaf
Clear opening sizes	900x2000mm, 1200x2000mm and custom sizes
Locking mechanism	Levers with multiple locking points, electronic optional
Leaf structure	Reinforced beams with panels

Custom-designed doors and walls offering superior protection against bullets and forced entry attempts. Built to meet EN 1522 standards (FB 4 NS, FB 4+ NS, FB 6 NS), these solutions are crafted from reinforced materials to ensure optimal security.

## Bullet Resistance

**EN 1522 standard up to FB6**

## Security

**Yes**

## Blast Protection

**Optional**

## Fire Rating

**Yes**

## Gastight

**Optional**



Main Features	
Installation options	Casting or Retrofit, right or left
Configuration	Single leaf
Clear opening sizes	900x2000mm, 1200x2000mm and custom sizes
Locking mechanism	Levers with multiple locking points, electronic optional
Leaf structure	Reinforced beams with panels

Lead or special protective materials-based doors for protection from radiation, which can be used in X-ray rooms, medical and industrial facilities, laboratories as well as shelters and protected spaces.

## Radiation Protection

Yes

## Security

Optional

## Blast Protection

Optional

## Fire Rating

Optional

## Gastight

Optional

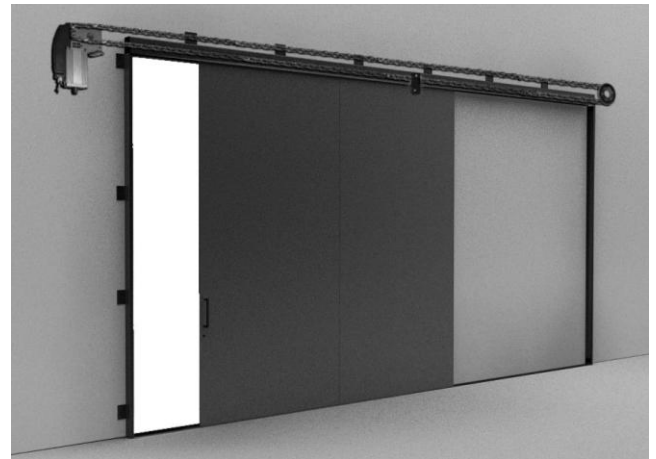
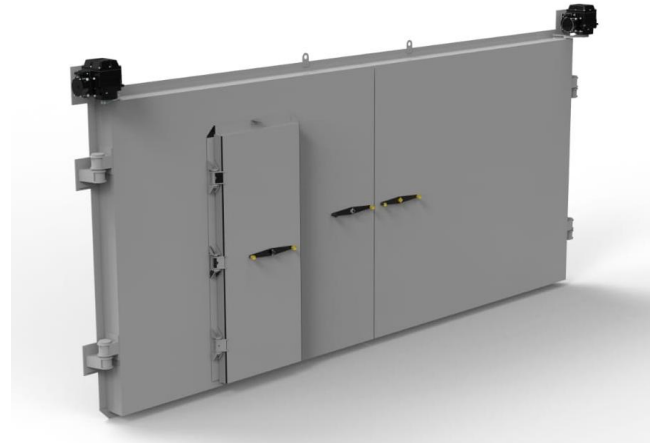




Atmas offers various options for hinged and sliding protective doors and gates for civil defence shelters, bunkers, safe rooms, industrial protected spaces and ammunition storage facilities and more.

We offer standard and custom designed doors which can comply with different international standards and norms.

Our gates can be designed to protect from blast and explosions, ballistic, forced entry, fire and more threats.





SU-IVR is a series of shelter blast rated, and gastight hatches designed to meet CEE shelter norms and perfectly fit for new construction or renovation projects.

**Blast Rating**

**100 (1) kPa (bar)**

**Splinter / Ballistic Protection**

**Optional**

**Gastight**

**Yes**



Main Features	
Installation options	Casting or Retrofit, right or left
Configuration	Side or top opening (with gas lift supports)
Clear opening sizes	600x900mm, 800x800mm and custom sizes
Locking mechanism	Levers with multiple locking points
Leaf structure	Reinforced beams with panels

SU-III and SU-I are part of a heavy-duty shelter hatches series blast rated, and gastight, designed to meet CEE shelter norms and perfectly fit for new construction or renovation projects.

## Blast Rating

**440 (4.4) / 900 (9) kPa  
(bar) Static**

## Splinter / Ballistic Protection

**Optional**

## Gastight

**Yes**



Main Features	
Installation options	Casting or Retrofit, right or left
Configuration	Singe or double leaf
Clear opening sizes	900x900mm, 800x800mm and custom sizes
Locking mechanism	Levers with multiple locking points
Leaf structure	Reinforced beams with panels

HS-1 and SL-2 is a series of shelter blast rated, and gastight doors designed to meet Finnish shelter norms for blast rating, ground shock resistance 30 g and more.

## Blast Rating

Technical norms: Finnish norms

## Splinter / Ballistic Protection

Yes, for some models

## Gastight

Yes



Main Features	
Installation options	Casting or Retrofit, right or left
Configuration	Singe or double leaf
Clear opening sizes	600x900mm, 700x1200mm and custom sizes
Locking mechanism	Locking bolts
Leaf structure	Steel plate 20mm or 30mm

SU-IVR is a series of shelter blast rated, and gastight hatches designed to meet CEE shelter norms and perfectly fit for new construction or renovation projects.

## Blast Rating

**100 (1) kPa (bar)**

## Splinter / Ballistic Protection

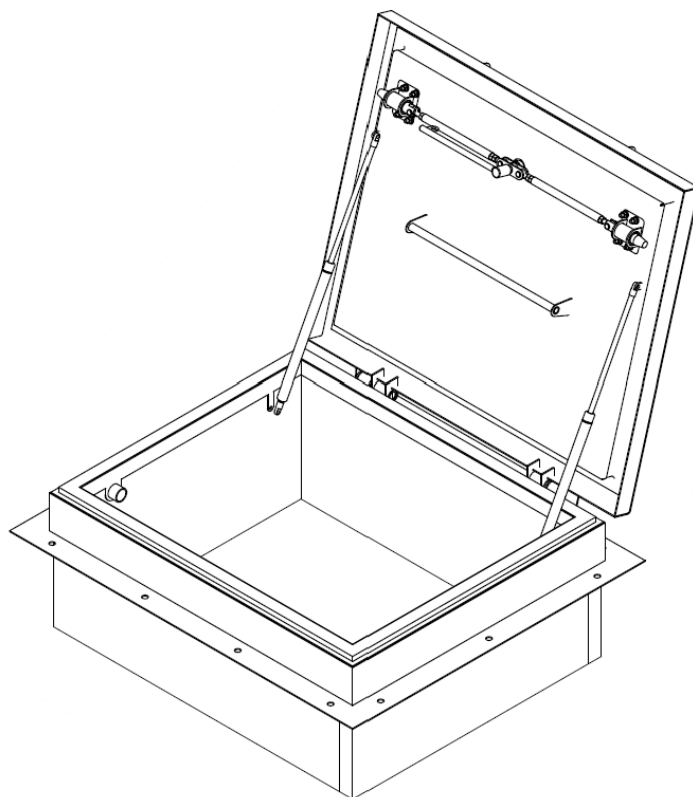
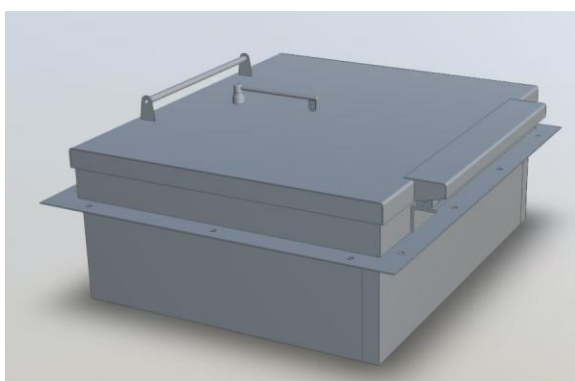
**Optional**

## Gastight

**Yes**

## Watertight

**Yes**



Main Features	
Installation options	Casting or Retrofit, right or left
Configuration	Top opening (with gas lift supports)
Clear opening sizes	Custom sizes
Locking mechanism	Levers with multiple locking points
Leaf structure	Reinforced beams with panels

HS-1 and SO-2 is a series of shelter blast rated, and gastight doors designed to meet Finnish shelter norms for blast rating, ground shock resistance 30 g and more.

## Blast Rating

Technical norms: Finnish norms

## Splinter / Ballistic Protection

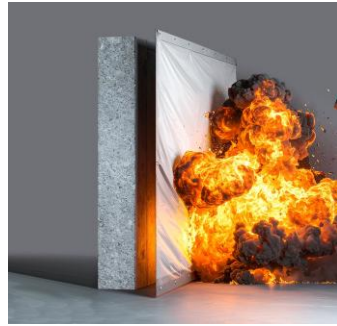
Yes, for some models

## Gastight

Yes



Main Features	
Installation options	Casting or Retrofit, right or left
Configuration	Singe or double leaf
Clear opening sizes	600x900mm, 700x1200mm and custom sizes
Locking mechanism	Locking bolts
Leaf structure	Steel plate 20mm or 30mm



## About Atmas

**Atmas Group** is a Finland-based global supplier of products, technologies, project support services and complete solutions in the areas of civil defense shelters and protected spaces, facilities reinforcement against CBRN, blast, ballistic, forced entry and EMP threats, as well as security, safety and emergency response.

Atmas is trusted by customers and partners around the world providing a unique combination of solutions "under one roof", with a focus on advanced technologies, product customization, uncompromised service and comprehensive project support.

### Atmas Group Oy

Hermannin rantatie 3A

00540 Helsinki

Finland

+358 449843373

[info@atmasgroup.com](mailto:info@atmasgroup.com)

[www.atmasgroup.com](http://www.atmasgroup.com)