



CATALOG

CBRN | CO₂ | CO Filtration & Air Management Solutions

CBRN (chemical, biological, radiological and nuclear) air filtration and ventilation systems designed for installation in shelters, bunkers, and other protected areas for providing fresh filtered air and creation of protected environment in the intended area.



SAFE 360



ARC 50



ARC 100 | 180 | 240 | 300



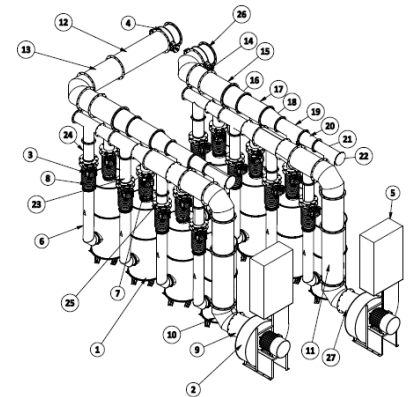
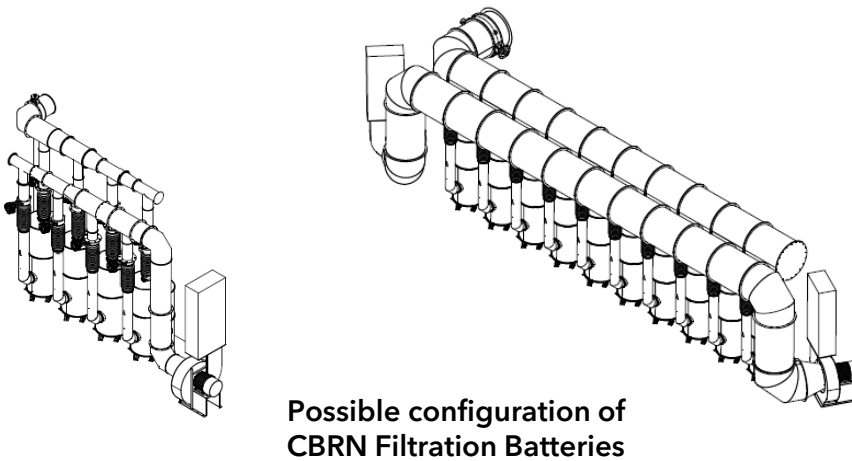
ARC 450 | 600



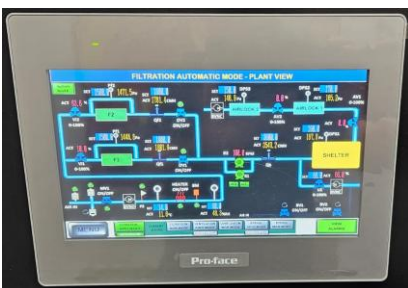
ARC 900 | 1200 | 1800



IVL-1



CBRN filtration systems are multifilter systems specially designed to fit project requirements like allocated space, airflow, standards, control system, etc.). Each system can be integrated with up to 10 filters with different airflows (600, 900, 1200 or 1800 m³/h) creating one unit with high air volume which can be used in larger civil defence shelters, bunkers and protected spaces.



Optional remote-control unit for automatic systems

CBRN, CO₂, CO filters and HEPA, ULPA and Safe Change Filters for air filtration systems and air handling units (AHU).

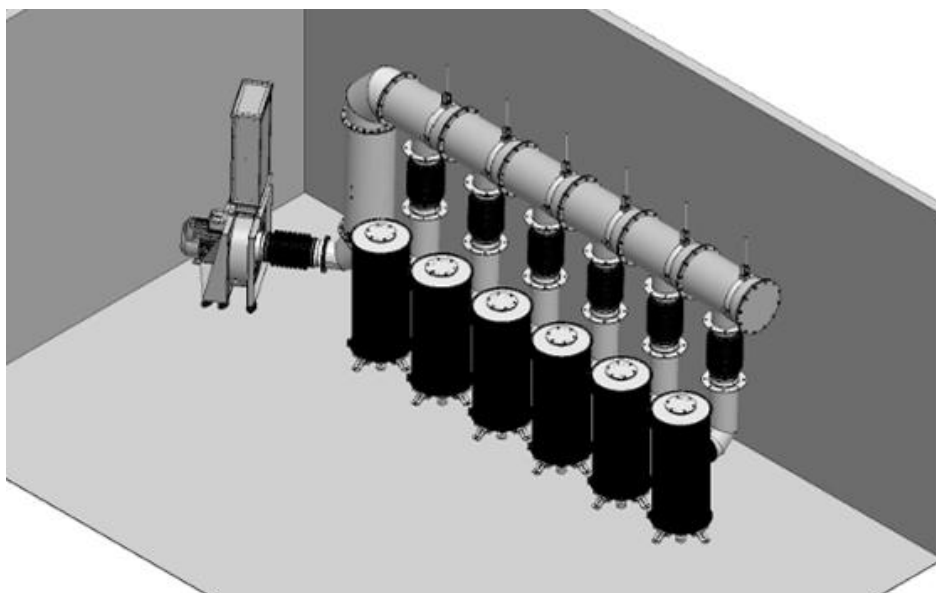
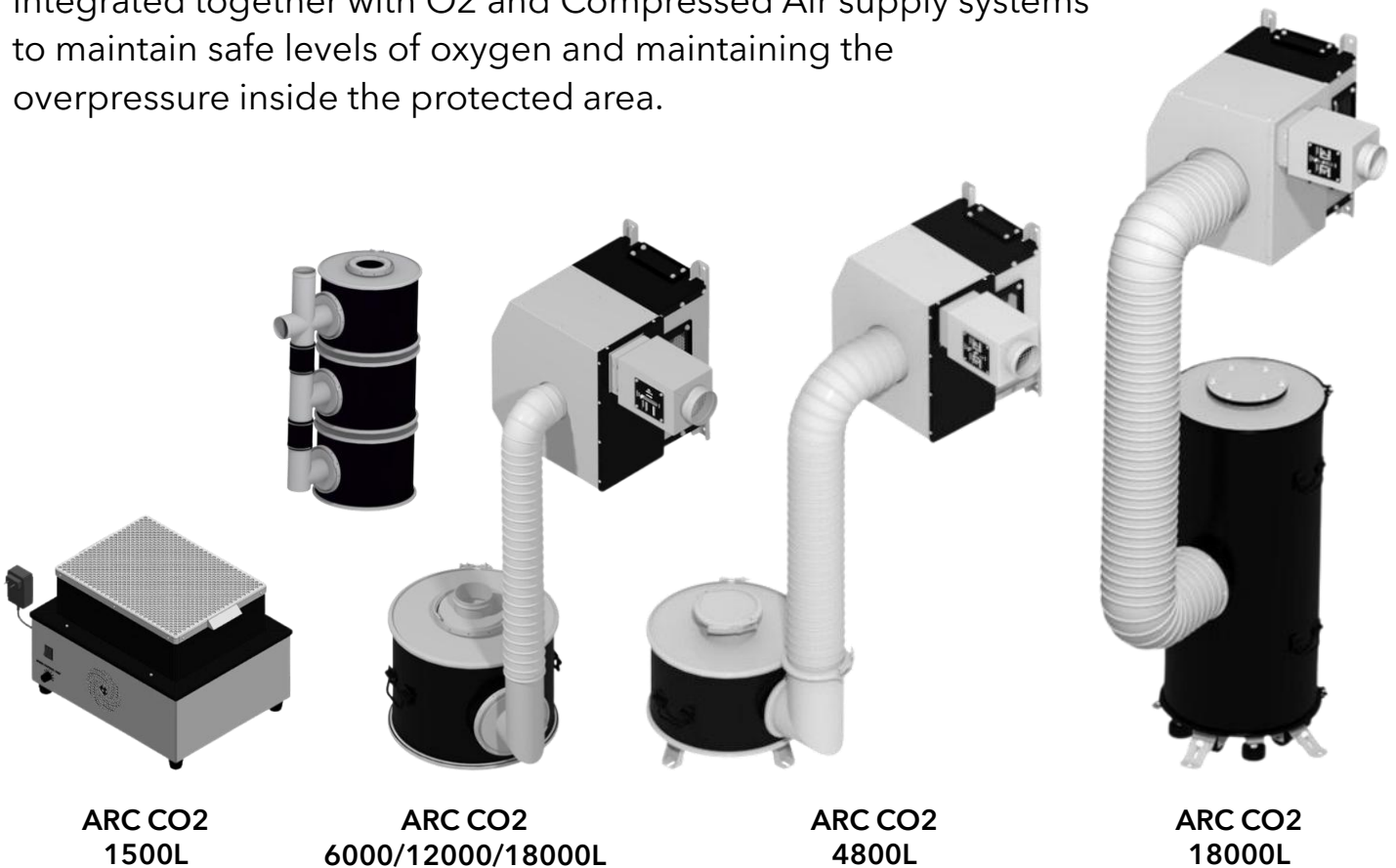
CBRN filters - AFU 36 / 50 / 100 / 240 / 300 / 450 / 600 / 900 / 1200 / 1800



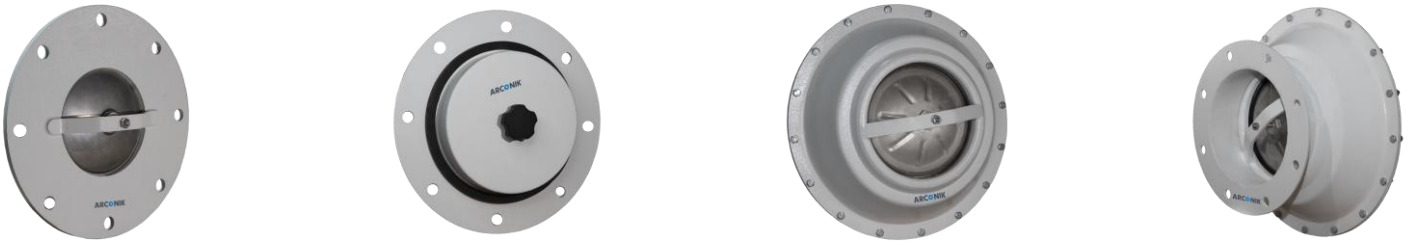
HEPA, ULPA and Dust Filters



Required for maintaining safe level of carbon dioxide (CO₂) and carbon monoxide (CO) in isolated from external environment shelters, industrial facilities and spaces. Such systems commonly integrated together with O₂ and Compressed Air supply systems to maintain safe levels of oxygen and maintaining the overpressure inside the protected area.



CO₂ multifilter scrubber



Blast / Overpressure Valves & Dampers



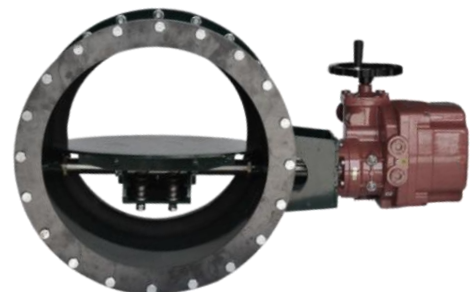
Blast valves (BVNO) – normally open valves which installed on ventilation openings or integrated into ventilation ducts to protect the system and internal space of shelters or facilities from sudden rise of pressure result of the blast.

Overpressure valves (BVNC) – normally closed valves which installed in airtight shelters to maintain overpressure levels by releasing the air.

Gastight valves (GTV) – valves with manual or electric drive are intended for installation on ventilation duct for blocking the airflow.



Gastight valves with manual and motorized operation

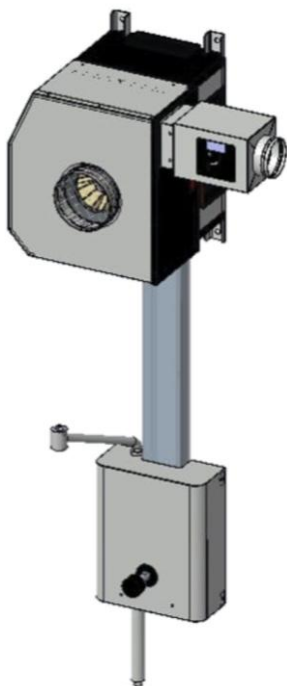


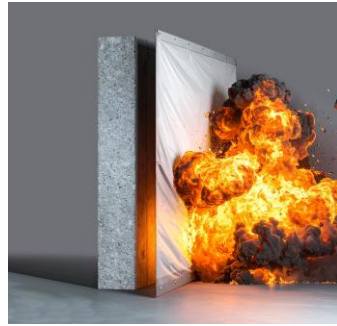
High- and low-pressure blowers for air filtration and ventilation systems with electric and manual operation function.

Blowers with manual backup



Large ventilation blowers





Atmas Group is a Finland-based global supplier of products, technologies, project support services and complete solutions in the areas of civil defense shelters and protected spaces, facilities reinforcement against CBRN, blast, ballistic, forced entry and EMP threats, as well as security, safety and emergency response.

Atmas is trusted by customers and partners around the world providing a unique combination of solutions “under one roof”, with a focus on advanced technologies, product customization, uncompromised service and comprehensive project support.

Atmas Group Oy

Hermannin rantatie 3A

00540 Helsinki

Finland

+358 449843373

info@atmasgroup.com

www.atmasgroup.com