

# ATM HS-1 / ATM HS-1S

## Shelter Blast Hatch

- Blast resistance: 200 kN/m<sup>2</sup> (2 bar)
- Leaf: 20 / 30 mm solid metal plate
- Installation: casting / retrofit, right / left
- Locking mechanism: 2x bolts
- Equipped with seal for gas tightness
- Standard sizes: 600x800 / 700x1200 / 800x800 mm
- Weight: 245 kg (HS-1 700x1200 mm)



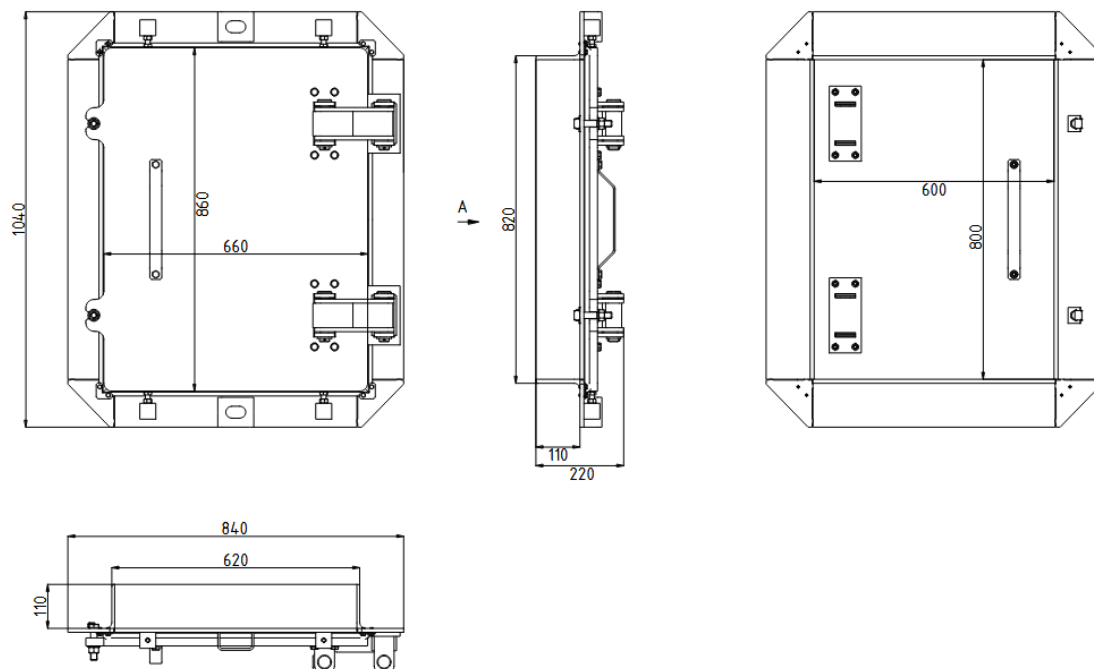
## Overview

ATM HS-1 and ATM HS-1S shelter hatches are designed to meet and, in some parameters, to exceed the Finnish norms for S1 shelters. The hatch leaf is made from 20mm thick single steel plate for ATM HS-1 and 30mm steel plate for ATM HS-1S providing additional splinter protection.

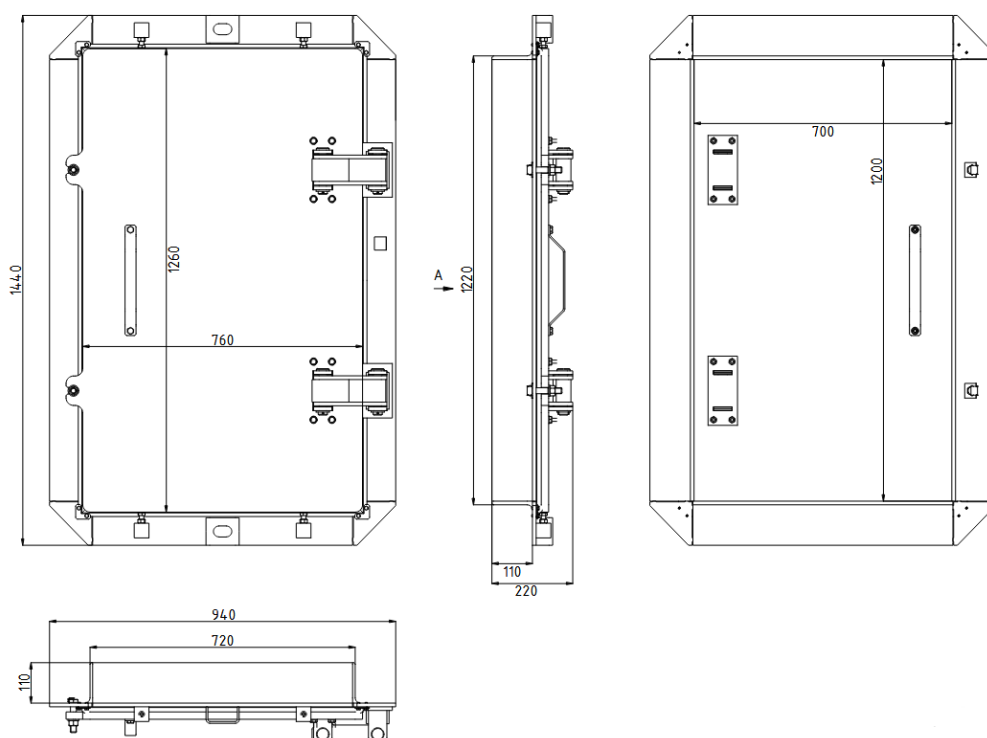
ATM HS-1 hatches have a multipoint locking system with locking bolts, providing improved protection against blast wave pressure and equipped with rubber seal for gas tightness.



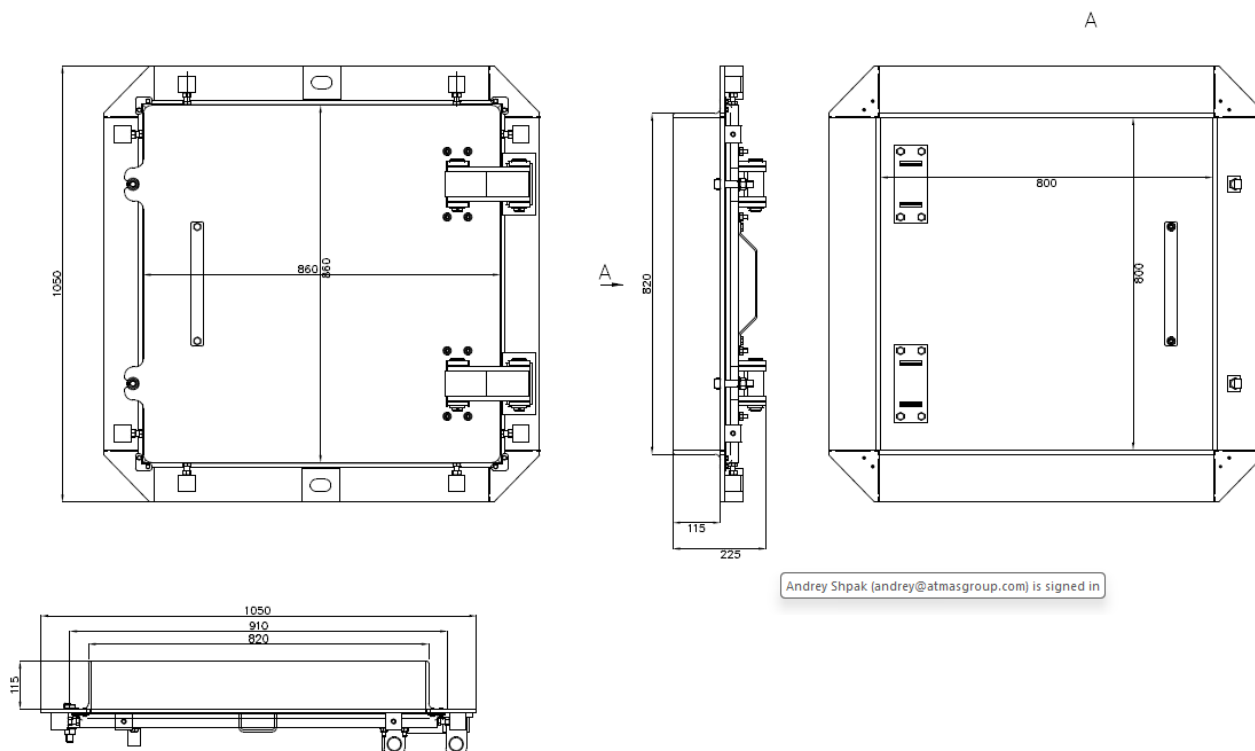
## HS-1 600x800mm



## HS-1 700x1200mm



## HS-1 800x800mm



Andrey Shpak (andrey@atmasgroup.com) is signed in



**Atmas Group** is a Finland-based global supplier of products, technologies, project support services and complete solutions in the areas of civil defense shelters and protected spaces, facilities reinforcement against CBRN, blast, ballistic, forced entry and EMP threats, as well as security, safety and emergency response.

Atmas is trusted by customers and partners around the world providing a unique combination of solutions “under one roof”, with a focus on advanced technologies, product customization, uncompromised service and comprehensive project support.

## Atmas Group Oy

Arielinkatu 2

00540 Helsinki

Finland

+358 449843373

[info@atmasgroup.com](mailto:info@atmasgroup.com)

[www.atmasgroup.com](http://www.atmasgroup.com)